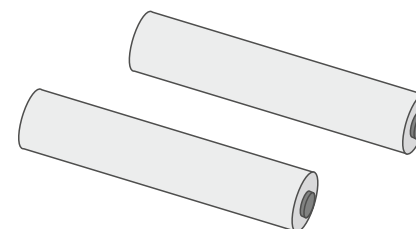


## Safety and Installation Instructions 2 Pack batteries for Blink EM



### Safety recommendations

1. Risk of electric shock – this product must be installed in accordance with applicable installation codes by a person familiar with mentioned above codes and hazards involved. disconnect power at circuit breaker or fuse before installing or servicing.
2. Before use of the product carefully read the whole Operation Manual.
3. Protect the product against direct contact with water.
4. Assemble the product only with the use of parts provided and the housing; improper assembly may result in device failing which could damage the product, personal property or cause injury.
5. Assembly shall follow with accessories delivered with the set only.
6. The device is not a toy, keep out of reach of children.



THIS IS NOT A TOY. KEEP AWAY FROM CHILDREN.

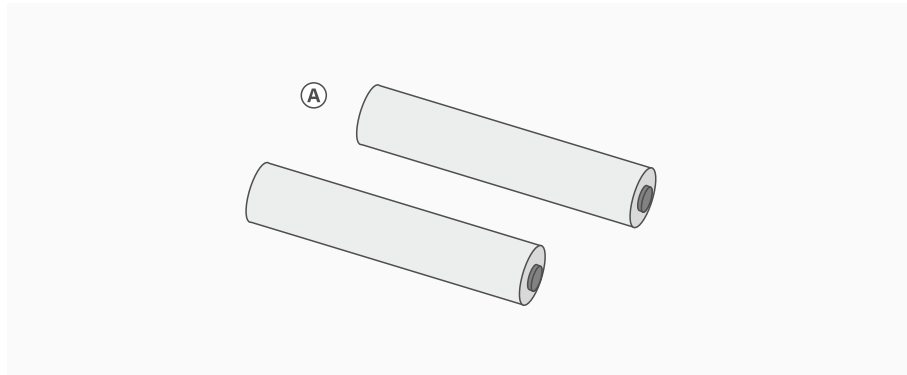
Operating Ambient 25 ~ 50 °C

#### CAUTION:

RISK OF SHOCK — DISCONNECT EMERGENCY

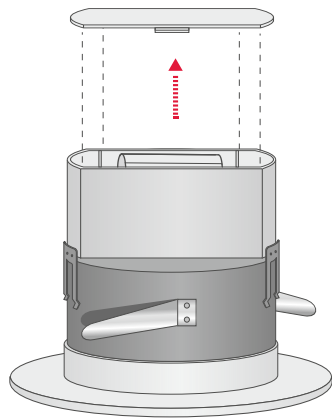
AND NORMAL INPUT POWER SOURCES BEFORE SERVICING

## BATTERY REPLACEMENT



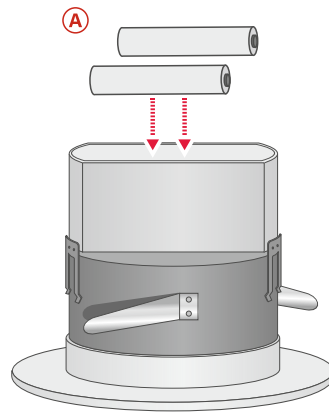
⚠ Shut power off before servicing this unit.

1



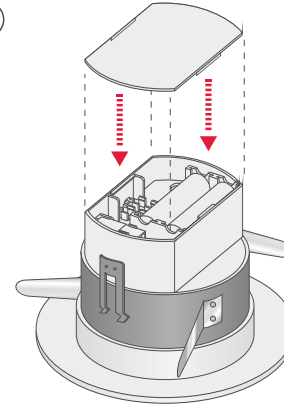
**STEP 1:** To access batteries pull down recessed trim package along with BBU, lift battery cover to remove old batteries.

2



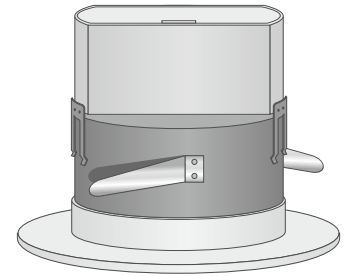
**STEP 2:** Re-install new batteries. (The New batteries in the package labeled 25/9001 are voltage matched. Do Not mix batteries from different packages).

3



**STEP 4:** Re-install battery cover and BBU back in to the recessed can/housing.

4



**STEP 5:** New Batteries are successfully installed and ready for operation.