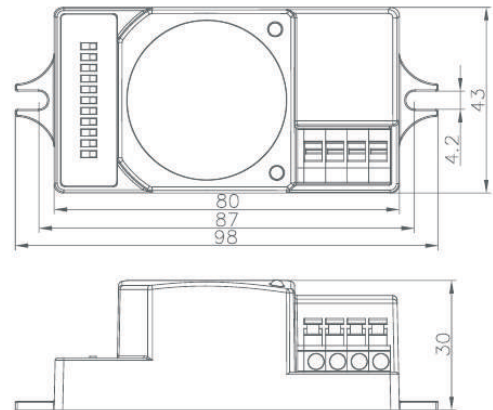
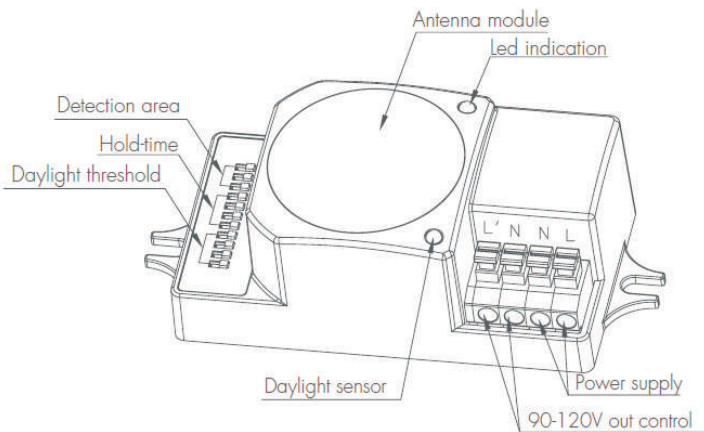


Occupancy sensor

Model: HC109S



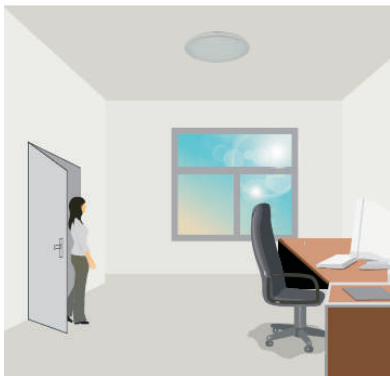
Model: HC109S (90-120V)

Mechanical structure

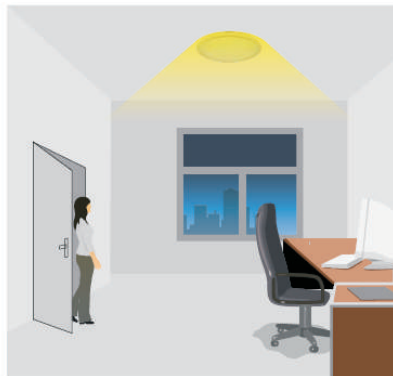
Function and options

On-off Function

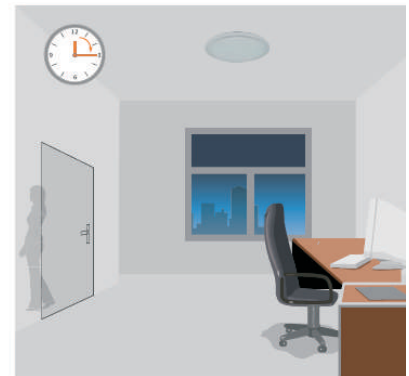
This sensor is a motion switch, turns on the light on detection of moving objects, and turns off after a pre-selected hold-time when there is no motion detected. A daylight sensor is also built-in to switch off the light when there is sufficient natural light.



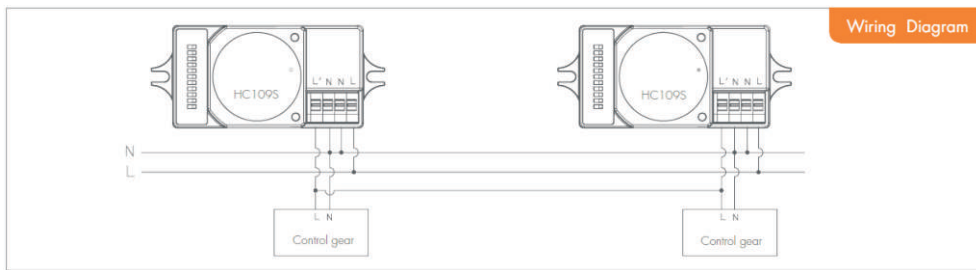
With sufficient natural light, the light does not switch on when presence detected



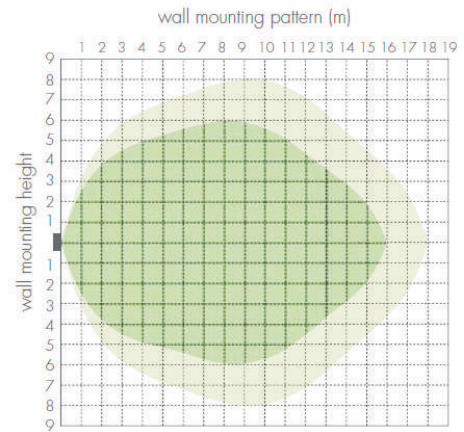
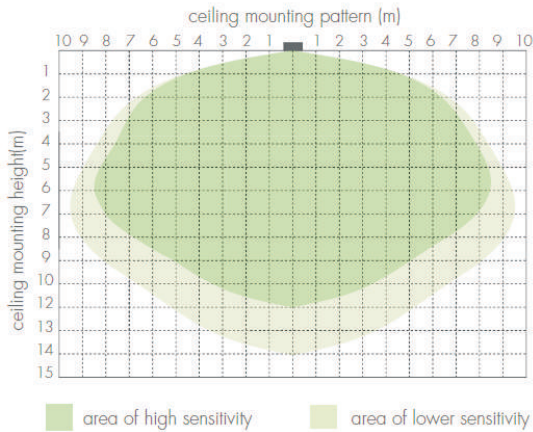
With insufficient natural light, the sensor switches on the light automatically when person enters the room



After the hold time, then switches off automatically when no movement is detected. Factory preset is 5 min.



Detection Pattern



Settings

1 Detection area

Detection area can be reduced by selecting the combination on the DIP switches to fit precisely for each specific application.

	1	2	3	
I	●	●	●	100%
II	○	●	●	75%
III	●	○	●	50%
IV	●	●	○	25%
V	○	○	○	10%

- I – Detection range 100%
- II – Detection range 75%
- III – Detection range 50%
- IV – Detection range 25%
- V – Detection range 10%

2 Hold-time

Hold-time means the time period you would like to keep the lamp on 100% after the person has left the detection area.

	1	2	3	4	
I	●	●	●	●	5s
II	○	●	●	●	30s
III	●	○	●	●	1min
IV	●	●	○	●	5min
V	●	●	●	○	15min
VI	○	○	○	○	30min

- I – 5s
- II – 30s
- III – 1minutes
- IV – 5minutes (factory preset)
- V – 15minutes
- VI – 30minutes

3 Daylight sensor

The daylight threshold can be set on DIP switches, to fit for particular application.

"daylight" : The lamp works always, even during daylight.

"twilight" : The lamp works only in twilight .

"darkness" : The lamp works only in darkness.

	1	2	3	4	
I	●	●	●	●	2Lux
II	○	●	●	●	5Lux
III	●	○	●	●	10Lux
IV	●	●	○	●	30Lux
V	●	●	●	○	50Lux
VI	○	○	○	○	Disable

- I – 2 lux darkness operation only
- II – 5 lux darkness operation only
- III – 10 lux twilight operation
- IV – 30 lux daylight operation
- V – 50 lux daylight operation
- VI – Photocell disabled

Technical Data

Operating voltage	90-120V (HC109S)
Switched power	HC109S: 200W (capacitive)
Standby power	<0.5w
Warming-up time	20s
Detection area	10/25/50/75/100%, can be customized
Hold time	5S/30S/1min/5min/15min/30min, can be customized
Daylight threshold	2~50lux daylight/twilight/darkness, can be customized
Microwave frequency	5.8GHz+/-75MHz
Microwave power	<0.2mw
Detection range	Max. (øxH): 18m x 10m
Detection angle	30°~150°
Mounting height	Max. 10m
Operating temperature	-35°C ~ +70°C
IP rating	IP20 IP65(mounting in Hytronik special box)
certificate	ETL FCC