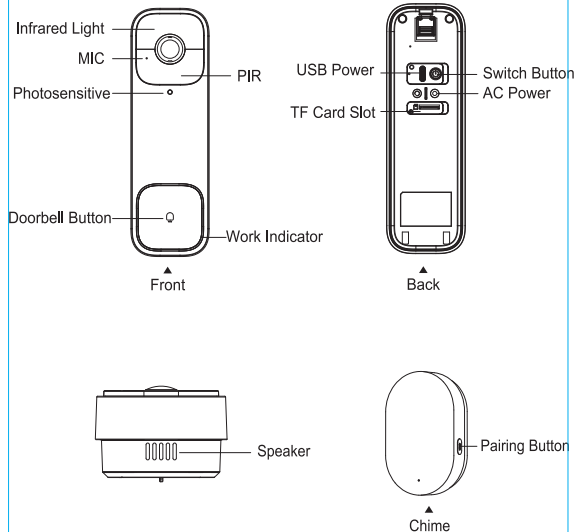


Smart Battery Doorbell

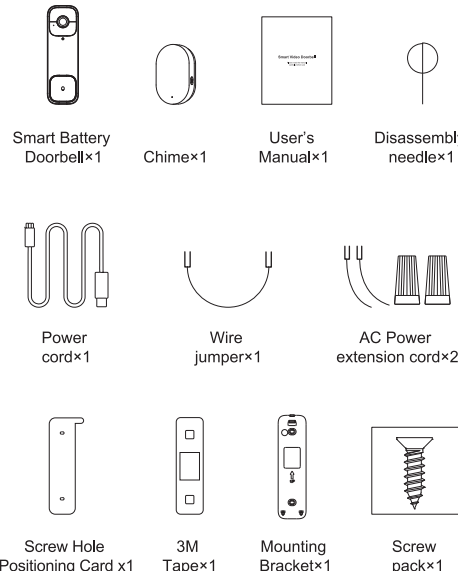
Please read the manual carefully before use

Product description



1

Packing list



2

Doorbell Status Light

Blue Light

Waiting for network connection—Blue light slowly blinks
Network connection failed—Blue light quickly blinks
Motion detected&Video call—Blue light breath
OTA Upgrading—Blue light slowly blinks
Normal standby—Blue light off
Doorbell malfunction—Blue light is always on

Green Light

Charging—Green light is always on
Charging completed—Green light off
Charging abnormal—Green light quickly blinks

Doorbell Prompt Tone

- After the doorbell is power on or reset, the doorbell will play "Please connect the router"
- Turn on the message function in the settings, the doorbell call is unanswered, the doorbell will play "please leave a message after the tone"
- Start message will play "start message"
- message end will play "message end"
- The doorbell is low power and will shut down, the doorbell will paly"Low battery, will shut down soon"

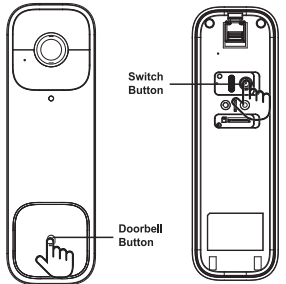
3

Disassembling the doorbell charging instructions

- Insert the disassembly needle into the hole and press down firmly; as shown ① ;
- Pull out the doorbell forward; as shown ② ;
- Plug in the USB cable to charge.

Basic Operations

Power on : Long Press "Switch Button" for 2 seconds
Power off : Press the "Switch Button" 3 times within 2 seconds
Reset : Long Press "Switch Button" for 5 seconds



4

Preparation for use

- When you get this product, please turn on the device first;use the configured power cord to fully charge the device;
At the same time, make sure that the phone is connected to a Wi-Fi network in the 2.4GHz frequency band.
- Download and open the App;
Search for "Smart Life" in the app store or scan the Download and install the App by QR code;

For the first download and use, please click the "register" button to register an account; if you already have an account, click "Login" button.



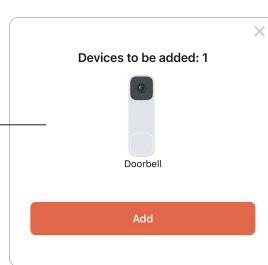
【 Smart Life】

5

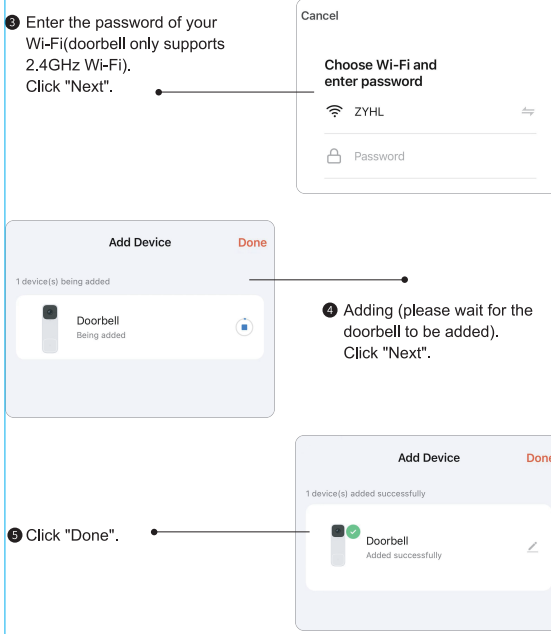
Configure Doorbell

- Long press "Switch Button" for 2s to turn on the doorbell, then long press "Switch Button" for 5s, the doorbell will sound "Please connect the router".
- Turn on the WIFI and Bluetooth of your phone and allow permission for "Smart Life".Then open the "Smart Life"APP(The first time you use this APP, you need to register an account)

- when you enter the APP,the doorbell will automatically popup to add. If not pop up, you can tap "Add Device",the doorbell will be displayed at the top of the interface.



6

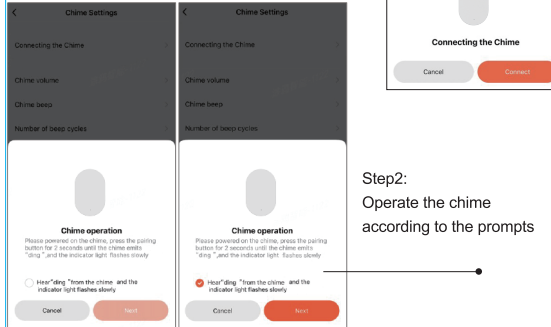


7

Chime Connect

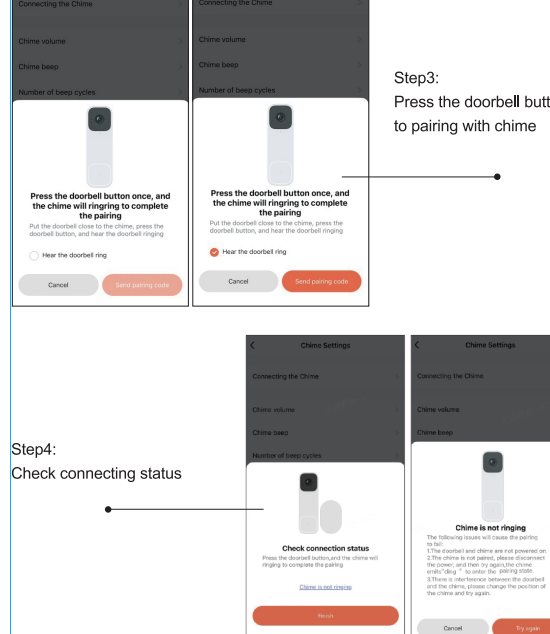
Enter the doobell setting interface, find the chime setting, and follow the steps to connect the chime

- Step1:
Click on chime setting, and click on connecting the chime, then click on connect



- Step2:
Operate the chime according to the prompts

8



- Step3:
Press the doorbell button to pairing with chime

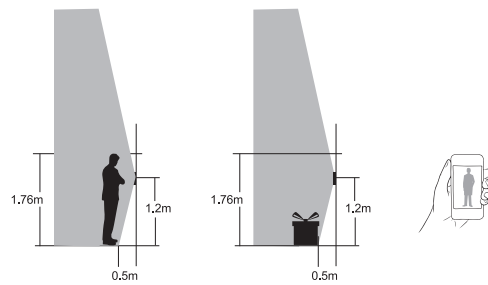
9

Find a Mounting Spot

Take the video doorbell to your front door and check the live view on the App at the same time. Find a location where you can get the desired field of view.

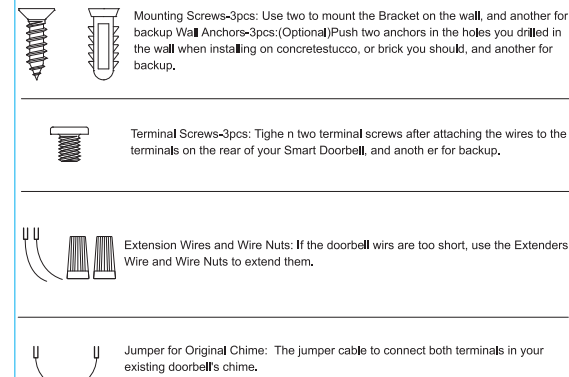
Consider the below factors:

- Check if you can reuse the existing holes and anchors on the wall or door frame.
- If you want to place the doorbell close to a side wall, make sure the wall don't show up in the field of view. Otherwise IR light will be reflected and night vision will become blurry.
- If you are drilling the mounting holes for the first time, the recommended mounting height is 48"/1.2m from the ground.
- If you use the package detection function, the package is recommended to be placed at a distance of 0.5 meters from the wall.



10

Installation Notes



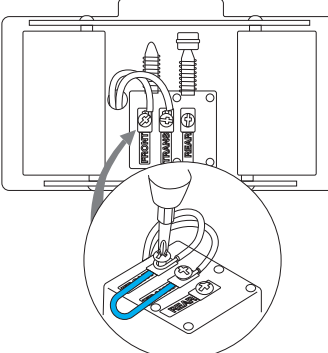
Install your Smart Doorbell 1

Powering the doorbell with existing doorbell wires

- Step 1:Ring the existing doorbell to check if it is working. If the doorbell doesn't ring, your doorbell wires may be defective, you can consult an electrician to fix the wires.
- Step 2:Shut off power at the breaker, Turn the lights on/off in your home to make sure the electricity in your house is properly shut off.

11

- Step 3: Use the provided jumper cable to connect both terminals in your existing doorbell's chime.



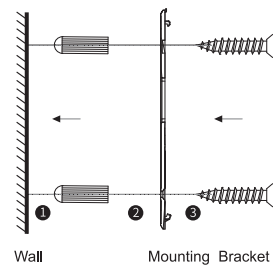
- Step 4: Uninstall your existing doorbell from the wall.Pull the two wires out carefully when removing the existing doorbell. Straighten the wire ends if necessary.

Step 5: Install Wall Anchors(Optional)

- If you're installing on a hard surface such as concrete stucco, or brick, use suitable tools to drill two holes in your wall, and push the provided anchors into these holes.
- If you're installing on wood, ignore this step.

12

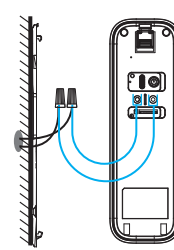
- Step 6: Mount your Bracket on the Wall with Mounting Screws;



13

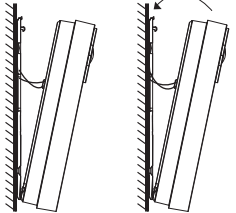
- Step 7: Connect the Wires to Smart Doorbell with Terminal Screws;

- If your doorbell wires too short , use the Wire Extenders and Wire Nuts to extend them.



14

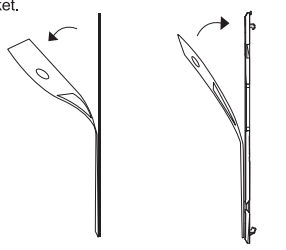
- Step 8: Mount the doorbell on the bracket. Align the doorbell on bottom and then push up, than snap it on the top.



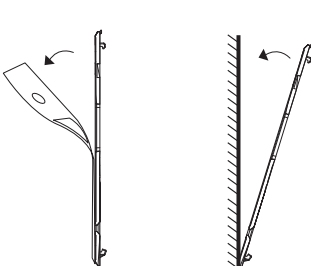
Install your Smart Doorbell 2

Wireless Installation

- Step 1: If you don't want to drill holes in the wall, you can use 3M tape to mount the doorbell
- Step 2: Tear off one side of the 3M tape protective film and stick it on the bracket.

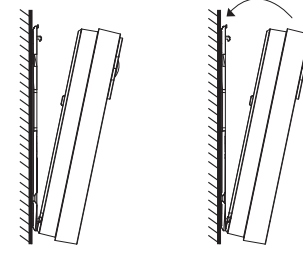


- Step 3: Tear off the other side of the 3M tape protective film and stick the bracket on the wall.



15

- Step 4: Mount the doorbell on the bracket. Align the doorbell on bottom and then push up, than snap it on the top.



FAQ

Q: APP can't find my doorbell.

A: Please power on your doorbell, turn on the Bluetooth of your phone and allow permission for "Smart Life"APP.

Q: Doorbell could not connect Wi-Fi.

A: Please check whether the Wi-Fi signal is sufficient, the doorbell only supports 2.4GHz Wi-Fi, not 5GHz, please make sure your Wi-Fi password is correct, and the password does not support special symbols.

Q: Device list is prompted device is offline.

A: Please check if doorbell's motion detect is turned on and the alarm settings are correct. Then check APP's push permission on your mobile phone.

Q: What should I do if my mobile phone does not receive doorbell's push.
A: Please check if doorbell's motion detect is turned on and the alarm settings are correct. Then check APP's push permission on your mobile phone.

Q: I have reset my doorbell, I cannot connect my doorbell again.

A: Please remove your device in your APP, then you reset your doorbell. Reset directly without unbinding the APP is invalid.

Q: Memory card is invalid.

A: Doorbell supports up to 128G micro SD card.

16

Technical Specifications

Doorbell

- Operating temperature -20℃ ~ 50℃, Operating humidity 10%~95%
- No condensation

Notice:

The maximum normal condition operating temperature is defined as +50℃ except battery charging condition. The maximum battery charger temperature is defined as 44℃.

- Frequency Range : 2.412~2.472GHz, Wifi RF Output Power: 17.5dBm, 433 RF Output Power: -20.1dBm
- Power: AC 8-24V ~ 50/60Hz 200mA and general 5V Direct Current 1.5A, symbol \equiv means direct current

Chime

- Operating Temperature -10℃ to 45℃ ; Operating Humidity <90% at 40℃
- Communication : RF 433MHz
- Power :100-240V~50/60Hz; Symbol \sim means alternating current
- Indoor use , bathroom excluded; Symbol \square means for indoor use only
- Symbol \square means Class II product-Double Insulated -No earth required

17

warning

Federal Communications Commission (FCC) Declaration of Conformity

FCC Caution: Any changes or modifications not expressly approved by the party responsible for compliance could void the user's authority to operate this equipment.
This device complies with Part 15 of the FCC Rules.Operation is subject to the following two conditions: (1) This device may not cause harmful interference, and (2) this device must accept any interference received, including interference that may cause undesired operation.
Note: This equipment has been tested and found to comply with the limits for a Class B digital device, pursuant to part 15 of the FCC Rules.These limits are designed to provide reasonable protection against harmful interference in a residential installation. This equipment generates, uses and can radiate radio frequency energy and, if not installed and used in accordance with the instructions, may cause harmful interference to radio communications. However, there is no guarantee that interference will not occur in a particular installation. If this equipment does cause harmful interference to radio or television reception, which can be determined by turning the equipment off and on, the user is encouraged to try to correct the interference by one or more of the following measures:
—Reorient or relocate the receiving antenna.
—Increase the separation between the equipment and receiver.
—Connect the equipment into an outlet on a circuit different from that to which the receiver is connected.
—Consult the dealer or an experienced radio/TV technician for help.
Radiation Exposure Statement
This equipment complies with FCC radiation exposure limits set forth for an uncontrolled rolled environment. This equipment should be installed and operated with minimum distance 20cm between the radiator and your body.

Declaration Of Conformity European Notice

Hereby, Zhejiang Lingzhu Technology Co., Ltd. declares that this product is in compliance with essential requirements and other relevant provisions of Directive 2014/53/EU,2011/65/EU.



This product must not be disposed of as normal household waste, in accordance with EU directive for waste electrical and electronic equipment (WEEE- 2012/19/EU). Instead, it should be disposed of by returning it to the point of sale, or to a municipal recycling collection point.
The device could be used with a separation distance of 20cm to the human body.

18



- Never used the appliance and its battery in extreme conditions (high or low extreme temperatures, high altitude...) during use, storage or transportation.
- Warning: Batteries shall not be exposed to excessive heat such as sunshine, fire or the like.
- Never damage the appliance and its battery.
- Never short circuit the battery.
- For pluggable equipment , the socket-outlet shall be installed near the equipment and shall be easily accessible.

English Warning Statement:

"This device complies with Industry Canada license-exempt RSS standard(s). Operation is subject to the following two conditions: (1) this device may not cause interference, and (2) this device must accept any interference, including interference that may cause undesired operation of the device."

French Warning Statement:

"Le présent appareil est conforme aux CNR d'Industrie Canada applicables aux appareils radio exempts de licence. L'exploitation est autorisée aux deux conditions suivantes : (1) l'appareil ne doit pas produire de brouillage, et (2) l'utilisateur de l'appareil doit accepter tout brouillage radioélectrique subi, même si le brouillage est susceptible d'en compromettre le fonctionnement."

Radiation Exposure Statement:

This equipment complies with Canada RF exposure limits set forth for an uncontrolled environment. This equipment should be installed and operated with minimum distance 20cm between the radiator & your body.
Cet appareil est conforme aux limites d'exposition aux rayonnements de l'IC établies pour un incontrôlé environnement. L'appareil doit être installé et utilisé avec une distance minimale de 20cm entre le radiateur et votre corps.

19