

# BLE 20A RECEPTACLE

Models: 87-602



## INSTALLATION AND SAFETY INSTRUCTIONS

**IMPORTANT:** Read before installing fixture. Retain for future reference.



### WARNING: Risk of Fire or Electric Shock

- Only authorized, qualified personnel should install this fixture and should follow the owner's manual. Any improper installation might cause failure, electric shock, fire or other injury, damage or hazard.
- To be installed and/or used in accordance with appropriate electrical codes and regulations. Exercise extreme caution when using Domino devices to control appliances. Operation of the Domino device may be in a different room than the controlled appliance, also an unintentional activation may occur.
- If the wrong button on the remote is pressed. Domino devices may automatically be powered on due to timed event programming. Depending upon the appliance, the unattended or unintentional operation(s) could possibly result in a hazardous condition.
- Domino enabled devices should never be used to supply power to, or control the On/Off status of medical and/or life support equipment.
- **Turn OFF power at circuit breaker before installing the unit.**

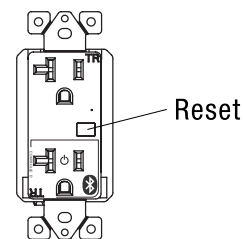
### INSTALLATION:

This receptacle may be used in new installations or to replace an existing wall receptacle.

#### HOW TO ADD

**STEP 1:** Press and hold the Reset button for three seconds until the blue indicator light starts flashing continuously, then release it.

**STEP 2:** Add 87-602 to the switch page on the app.



### WIRING INSTRUCTIONS:

**STEP 1:** For retrofit applications, remove wall plate.

**STEP 2:** Verify power is OFF before continuing.

**STEP 3:** Remove the existing receptacle from the box.

**STEP 4:** Disconnect the wiring from the existing receptacle.

**STEP 5:** Connect the 87-602 receptacle as shown in the wiring diagram: Black lead to HOT wire, white lead to NEUTRAL wire, green lead to GROUND wire.

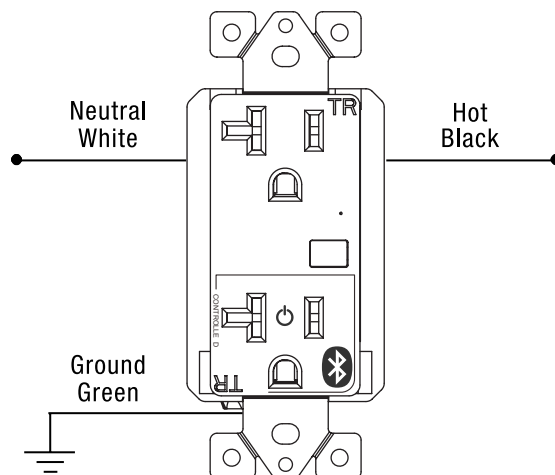
**STEP 6:** Check connections to be sure they are tight and no bare conductors are exposed.

**STEP 7:** Insert the 87-602 receptacle into the outlet box carefully.

**STEP 8:** Make sure the 87-602 receptacle to the box using the supplied screws.

**STEP 9:** Attach the wall plate.

**STEP 10:** Restore power at the circuit breaker and test the system.

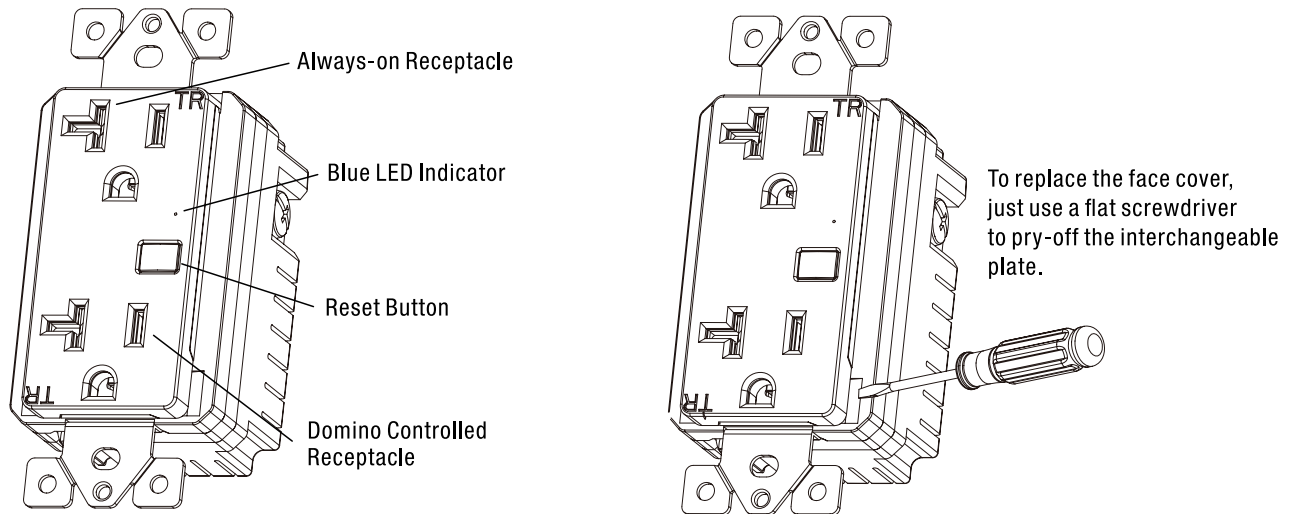


- **Wire Strip Length:** 16mm (5/8 in.)
- The device fits standard outlet boxes.

## OPERATION:

This receptacle may be used in new installations or to replace an existing wall receptacle.

- **Always-on Receptacle:** Always connected, not be controlled by button or APP, switch or program button.
- **Domino Controlled Receptacle:** Can be turned On/Off by APP, switch or reset button.
- **Blue LED Indicator:** Flashes on powering on or receiving wireless commands.



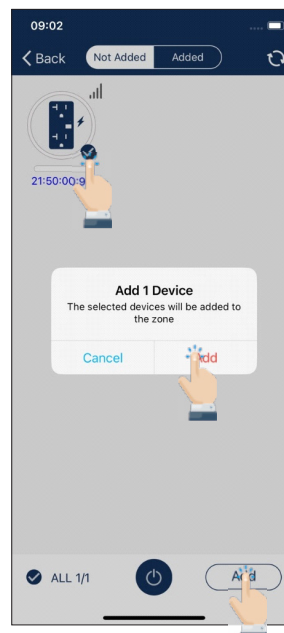
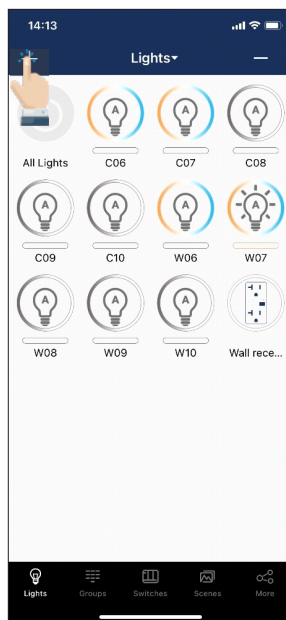
## RESET BUTTON:

- **Short press:** Turn On/Off controlled receptacle.
- **Long press for 6 seconds:** Reset the controller to factory setting to be ready to added by APP. You will hear gentle clicks of the relay when the controller begins reset.

## ADD CONTROLLER TO APP:

Go to Lights page on APP, click the “+” button to start adding the controller. Check the controller, click “Add” and confirm to add the dialog box to the controller.

NOTE: Reset the controller if it does not show up in the process.



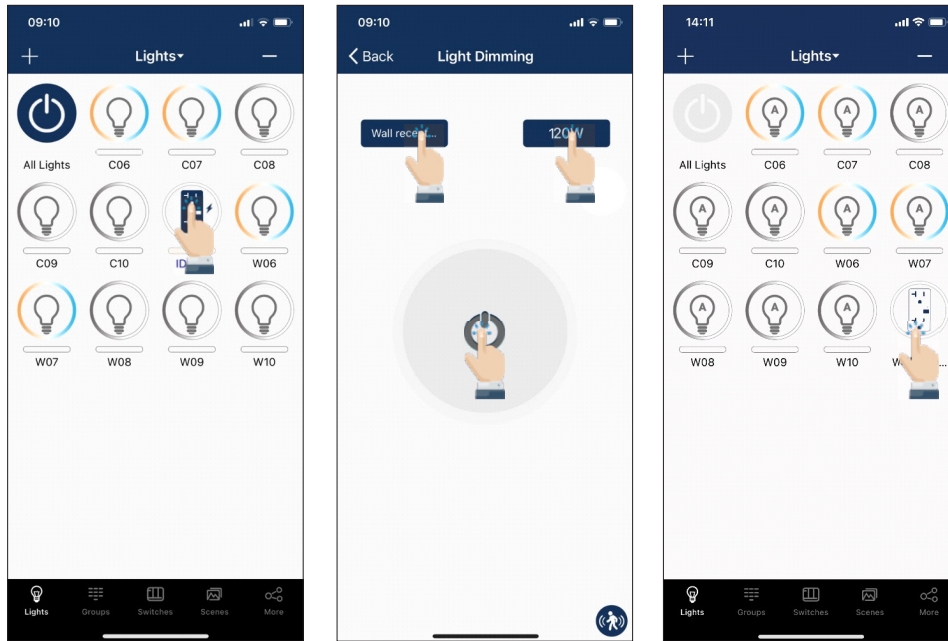
## NAMING AND TURNING ON/OFF:

Long press the controller icon on Lights page to bring out the dimming page.

You may rename the controller, input the wattage of the load, and turn On/Off the controller.

You may click the icon on Lights page to turn On/Off the controller. The icon shows the current status of the controller.

You may also add the controller into a group, a scene, associate it with switches, schedules to manually or automatically turn On/Off it.



## GROUPING AND LINKING WITH OTHER SENSORS:

Click the sensor setting button on controller's dimming page.

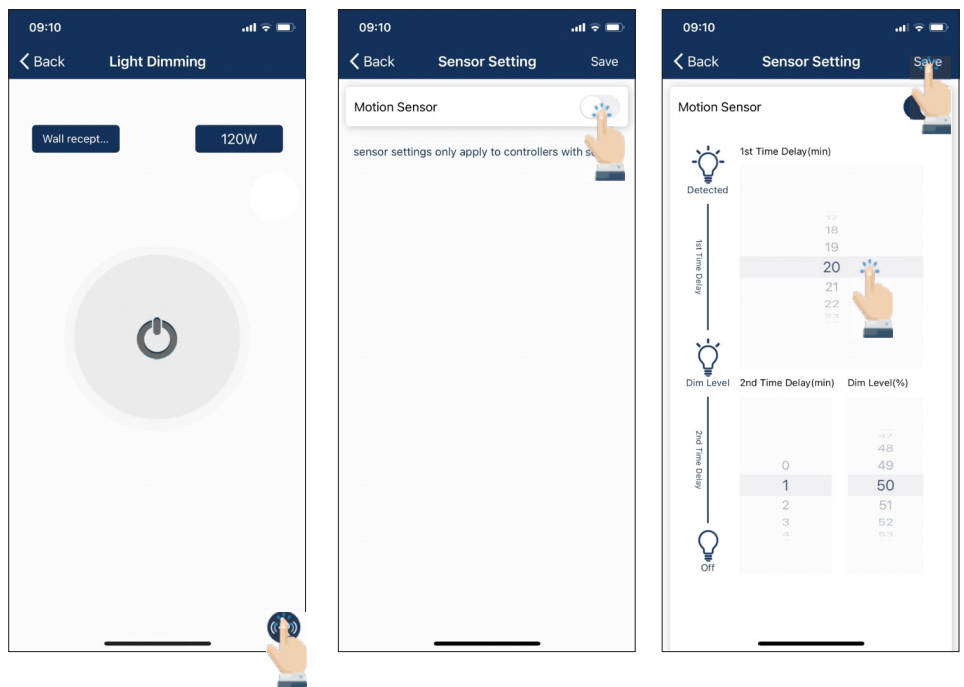
Enable the motion sensor function for the controller.

Set the appropriate parameters and click "Save" to send it to the controller.

You may also add the controller to a group with other Domino sensors, enable linkage so it can be automatically controlled by motion sensors in the same group.

You need to follow the steps to:

- Enable the motion function on controller.
- Add the controller to a group with other sensors.
- Set the sensor parameters for the sensors and controller.
- Enable the linkage for this group.

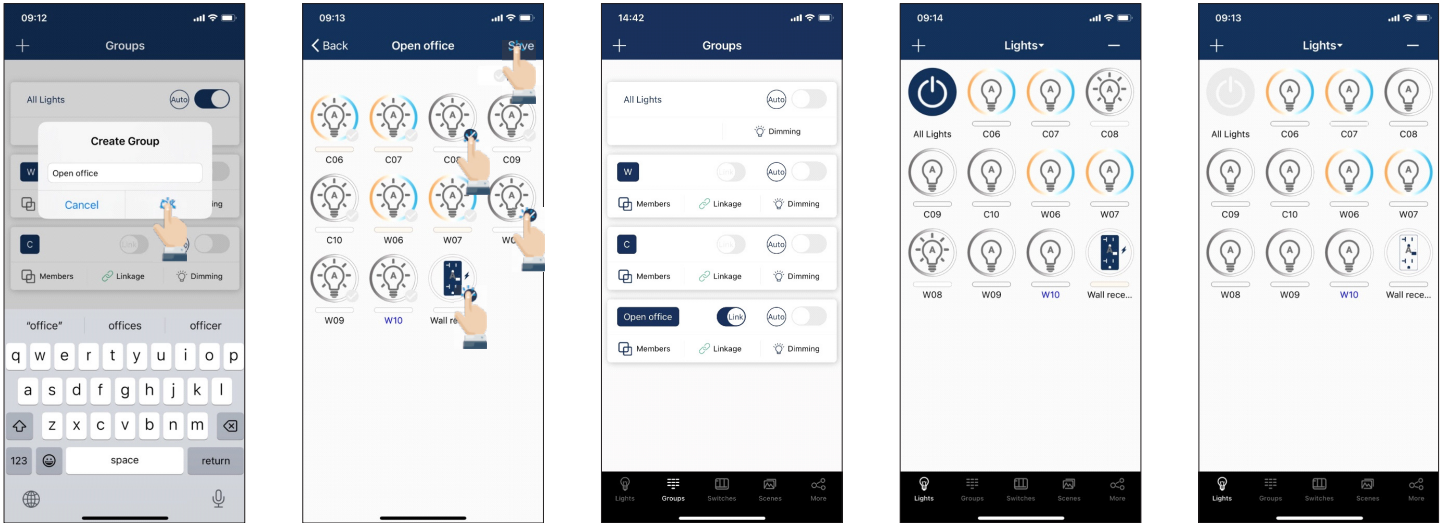


## GROUPING AND LINKING WITH OTHER SENSORS:

Create a group, check the members of this group and save it. Set the appropriate linkage level and enable the “Link” on this group.

Now when the sensors in this group is triggered, the controller will be linked to turn on. It will be turned off when sensors timed out.

There is an “A” in the icon to indicate that the controller is in auto mode and controlled by sensors.



Scan below QR code for downloading the APP.



## How to Control Lights with a Phone?

Scan to download APP instruction.



**WARRANTY:** This product is guaranteed for a 5-year warranty. Any quality issue in normal use within the warranty period, will be repaired or replaced according to the situation and under the condition specifications can be provided. Visit [www.Satco.com](http://www.Satco.com) for full warranty details and dimmer compatibility information.