



# USER GUIDE

## SYSTEM REQUIREMENTS

- Minimum iOS 9.3 or Wi-Fi 4.4
- Dedicated 2.4GHz Wi-Fi Network

## TECHINICAL SUPPORT

support@satcostarfish.com

### 1 DOWNLOAD THE STARFISH APP



(App design is subject to change without notice.)

## REGISTER YOUR ACCOUNT

Verify you're connected to a 2.4GHz Wi-Fi Network.

2 Launch the STARFISH app and tap "Sign-up" to create a new account or "Login" to your existing account.

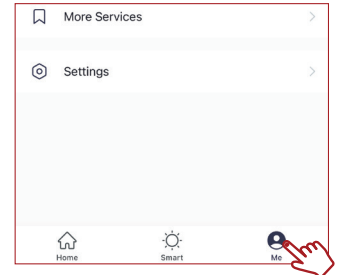
3 Enter email address, then select "Get verification code".

4 Enter verification code that was sent to your email.

## CREATE A HOME

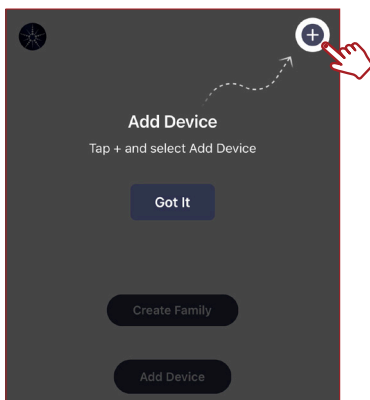
5 Tap the "Me" button at the bottom of the screen, and then "Home Management".

Select the "Create a home" button to set up your home.

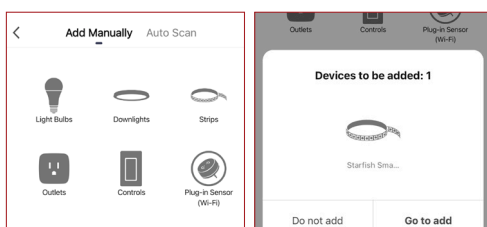


## ADD A DEVICE

6 Tap the (+) button on the top right corner to access the action menu, then select "Add Device".



7 Select device type from the listed categories.



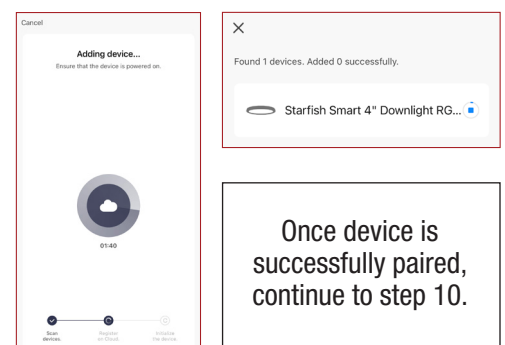
## PAIR A DEVICE WITH WI-FI

8A To put the device into pairing mode, press and hold the power button for approximately 5 seconds until the switch or plug starts flashing, then release the button. The device is now ready to be paired.



9A Select your 2.4GHz Wi-Fi Network name and enter password then click "Next."

The pairing status screen will appear.



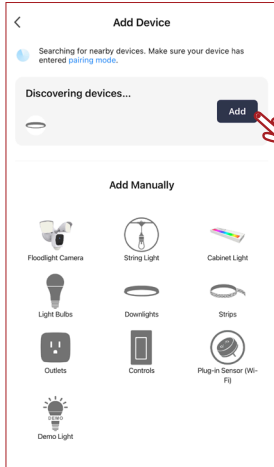
Once device is successfully paired, continue to step 10.

## PAIR A DEVICE WITH WI-FI/BLUETOOTH

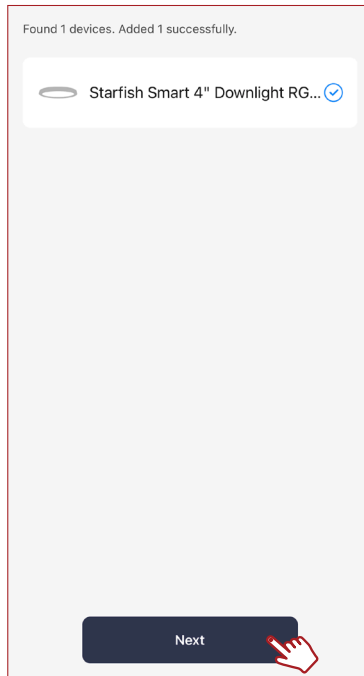
Note: Verify your mobile device is connected to a 2.4GHz Wi-Fi Network and that you have Bluetooth turned ON for connection.

**8B** For Wi-Fi/Bluetooth enabled devices, you will see a pop-up indicating that there are unpaired devices in the area. The device does not need to be in pairing mode.

Tap "Add" and select the devices you would like to connect.

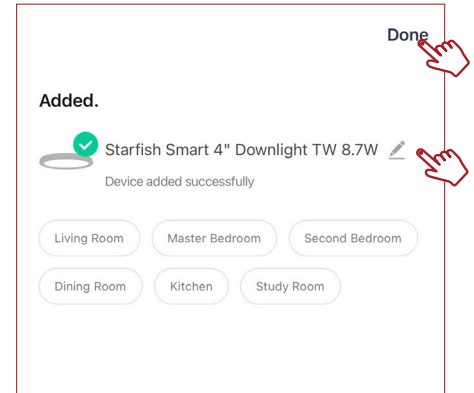


**9B** Once all the devices have connected, tap "Next".



Once device is successfully paired, continue to step 10.

**10** When successfully connected, you may rename the device. Tap the "Pen" icon, enter the new name and select "Done". The device is now ready to be controlled with the STARFISH app.



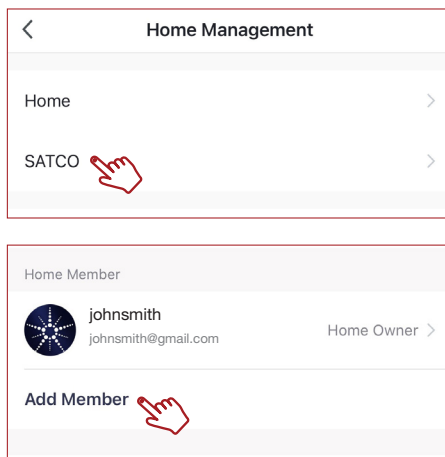
Note: If pairing is unsuccessful, please refer to the FAQs on [Satco.com/Starfish](http://Satco.com/Starfish)

Bluetooth is strictly used to pair and connect the device. A 2.4GHz Wi-Fi Network is required to operate all STARFISH products.

## SHARE A HOME

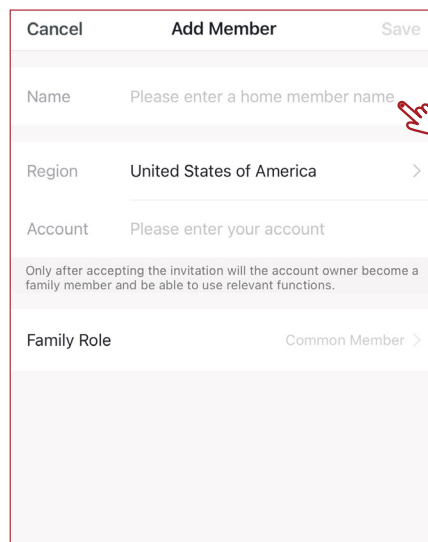
**11** From the Home Management screen, select the Home that you would like to share.

Tap "Add Member" and select the way that you would like to send the invitation



**12** Enter the user information and select if the new member will be an "Administrator" or a "Common Member" in the Home.

Tap "Save" to send the invitation.



To view the entire STARFISH product line visit [Satco.com/STARFISH](http://Satco.com/STARFISH)



Scan QR Code to learn more