

PRODUCT INFORMATION

LED Flush Mount Emergency Battery Back-up Ready (EMR)

EMR fixtures by Nuvo Lighting: Efficiency, safety and style all in one package.

This all-new collection of flush mount fixtures combines the latest in LED technologies, current safety standards and adds clean, contemporary design to create one of the most advanced fixtures in the industry. Each fixture is manufactured to easily accept an emergency battery back-up disk (sold separately), which quickly transforms these attractive flush fixtures into functional emergency lighting devices. These fixtures allow safety specifications to be met without sacrificing design or efficiency.

Features

- 100 Watt equivalent
- 20 Watts—over 80% energy savings
- 120-277V
- High color rendition (90+ CRI)
- Dimmable—120V only
- Dimming range 20%-100%
- Suitable for damp locations*
- Operating temperature -17°C to 45°C
- 5 Year warranty



62-977



62-981



62-978



62-982



62-975



62-971



62-976



62-972



LED flush mount utility fixtures

Item No.	Description	W	Finish	Light Source	CCT	Lum.	CRI	Life/Hours	Dimensions	UPC
62-971	20W/LED/3000K/90CRI/120-277V	20	Brushed Nickel	LED Module	3000K	1660	90+	40,000	15" w x 4" h	045923329715
62-972	20W/LED/3000K/90CRI/120-277V	20	Aged Bronze	LED Module	3000K	1660	90+	40,000	15" w x 4" h	045923329722
62-975	20W/LED/3000K/90CRI/120-277V	20	Polished Nickel	LED Module	3000K	1660	90+	40,000	14" w x 4.6" h	045923329753
62-976	20W/LED/3000K/90CRI/120-277V	20	Aged Bronze	LED Module	3000K	1660	90+	40,000	14" w x 4.6" h	045923329760
62-977	20W/LED/3000K/90CRI/120-277V	20	Brushed Nickel	LED Module	3000K	1660	90+	40,000	14" w x 5.4" h	045923329777
62-978	20W/LED/3000K/90CRI/120-277V	20	Aged Bronze	LED Module	3000K	1660	90+	40,000	14" w x 5.4" h	045923329784
62-981	20W/LED/3000K/90CRI/120-277V	20	Polished Nickel	LED Module	3000K	1660	90+	40,000	15" w x 4.5" h	045923329814
62-982	20W/LED/3000K/90CRI/120-277V	20	Aged Bronze	LED Module	3000K	1660	90+	40,000	15" w x 4.5" h	045923329821

*Not suitable for damp location if used with optional battery backup disk.

Emergency battery back-up disk ready

The emergency battery back-up disk, Satco model S9299 (120V) or Satco model S9780 (277V) (not included), easily mounts inside the pan of these fixtures instantly making them emergency lighting compliant. Battery back-up disk includes both the test button and indicator light. Batteries are easily accessible and included.

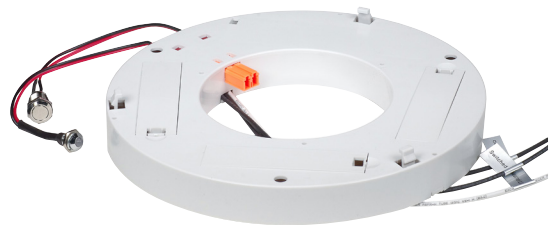
- Rechargeable batteries
- 90 minute run time



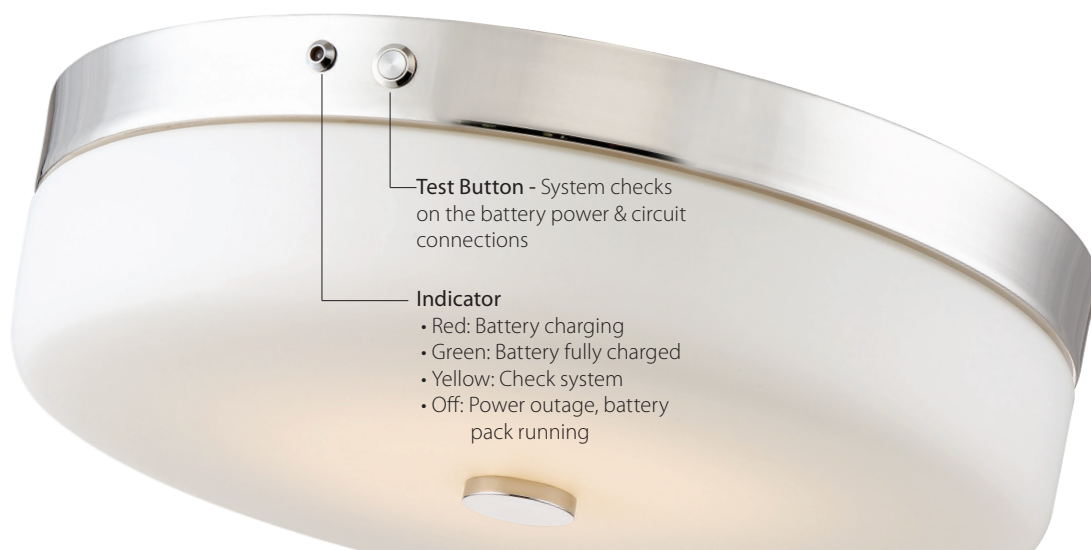
Remove the logo plate to mount the battery back-up indicator light and test button (included with battery back-up disk, sold separately).



Battery back-up disk (sold separately)



S9299 - 120V Battery back-up disk
S9780 - 277V Battery back-up disk



Test Button - System checks on the battery power & circuit connections

Indicator

- Red: Battery charging
- Green: Battery fully charged
- Yellow: Check system
- Off: Power outage, battery pack running