

**SLEEK DESIGN, ALL-WEATHER
CONSTRUCTION & SUPERIOR
LED LIGHT OUTPUT,
THESE ARE MADE FOR
THE TOUGHEST APPLICATIONS**



28, 40W, 60W AND 70W OPTIONS

4000K AND 5000K OPTIONS

8.5" & 10" SIZES

**CEILING OR
3/4" PENDANT MOUNTING**

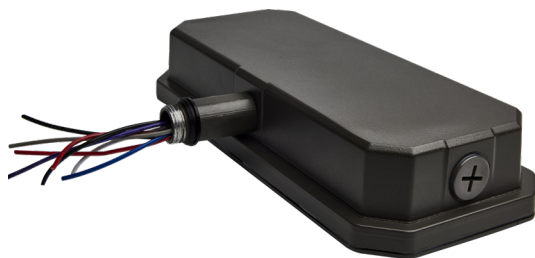
IP65

**OPTIONAL MICROWAVE SENSOR,
PHOTCELL AND
ADD-ON EM AVAILABLE**

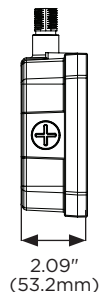
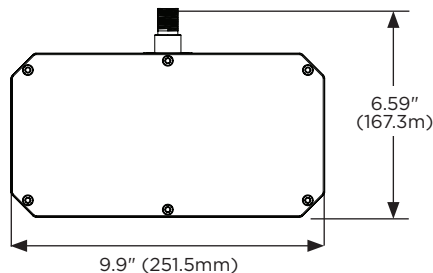
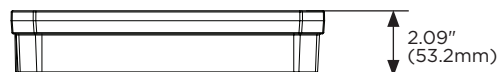
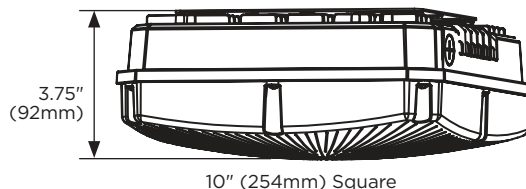
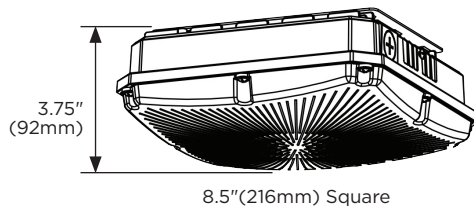
Our square LED canopy fixtures are engineered for the toughest applications. Their sleek design makes them perfect for spaces with constrained height and wherever efficient, clean LED light is a must. They are easy to install and will stand up to the harshest environments.



SATCO NUVO FUNCTIONAL



65-150
9W, 90 Min. run time
emergency battery backup



Item	Description	W	CCT	Lm	Pack
65-138	8.5" Square Canopy - Bronze	28	4000K	3360	6
65-139	8.5" Square Canopy - Bronze	28	5000K	3360	6
65-140	8.5" Square Canopy - Bronze	40	4000K	4800	6
65-141	8.5" Square Canopy - Bronze	40	5000K	4800	6
65-142	10" Square Canopy - Bronze	28	4000K	3360	4
65-143	10" Square Canopy - Bronze	28	5000K	3360	4
65-144	10" Square Canopy - Bronze	40	4000K	4800	4
65-145	10" Square Canopy - Bronze	40	5000K	4800	4
65-146	10" Square Canopy - Bronze	60	4000K	7200	4
65-147	10" Square Canopy - Bronze	60	5000K	7200	4
65-148	10" Square Canopy - Bronze	70	4000K	8400	4
65-149	10" Square Canopy - Bronze	70	5000K	8400	4
Accessories					
65-150	Add-on Emergency Battery Backup				10
86-203	Add-on Microwave Sensor				100
86-204	Add-on Photocell				100

*Consult Satco or visit www.satco.com for an up to date dimmer compatibility list.

SATCO DISTRIBUTION CENTERS

NEW YORK (HQ)
110 HEARTLAND BLVD
BRENTWOOD, NY 11717
T. 631-243-2022
F. 631-243-2027

TEXAS
2000 VALWOOD PKWY
FARMERS BRANCH, TX 75234
T. 972-247-2437
F. 972-247-5408

FLORIDA
1694 NW 215TH ST
MIAMI GARDENS, FL 33056
T. 305-624-2044
F. 305-623-0286

CALIFORNIA
31288 SAN BENITO ST
HAYWARD, CA 94544
T. 510-487-4822
F. 510-487-8955

WASHINGTON
4710 116TH ST SW
MUKILTEO, WA 98275
T. 425-789-3300
F. 425-789-3310

PUERTO RICO
CAMPECHE STREET, 23
JULIO N. MATOS INDUSTRIAL PARK
CAROLINA, PR 00984
T. 787-757-3510
F. 787-757-3540

Products inventoried in Canada & Mexico, contact: internationalsales@satco.com / 631-243-2022 Ext. 315