



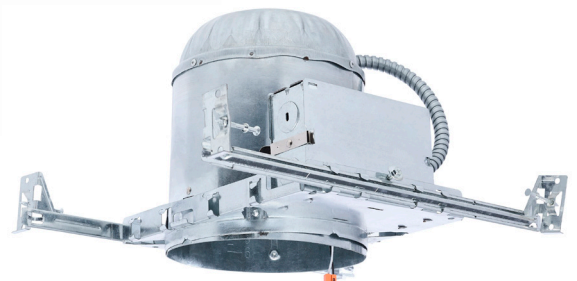
LED READY RECESSED HOUSINGS

ICAT RATED WITH QUICK DISCONNECT

NEW CONSTRUCTION



Expandable Hangers
up to 24"



LED Quick Connect

REMODEL



LED Quick Connect



**QUICK CONNECT READY
(NON-SCREW BASE) FOR LED
RETROFIT MODULES**

**INSULATION CONTACT
(IC) RATED FOR USE IN
INSULATED CEILINGS**

**EXPANDABLE NEW
CONSTRUCTION HANGERS
WITH PRE-INSTALLED NAILS**

**STRONG GALVANIZED STEEL
CONSTRUCTION**

**SUGGESTED APPLICATIONS:
RESIDENTIAL AND
COMMERCIAL**

SATCO|NUVO's LED Ready Recessed Cans are available for both new construction and remodel applications. IC rated, these cans are safe for installations where the cans may come into contact with insulation without risking overheating, and are wet location rated, allowing them to be used in spaces with high humidity levels such as bathrooms or laundry rooms. Quick connect ready to easily accommodate LED retrofit modules.



GENERAL SPECIFICATIONS

Input Voltage: 120V

Construction: Galvanized Steel

Wet Location Rated*

Insulation Contact Rated


Airtight per ASTM E283/E283M-19

ITEM SPECIFICATIONS / ORDER INFO



| Item | Description | Case Quantity |
|--------|--------------------------------------|---------------|
| 80-980 | 4" RECESSED CAN FOR NEW CONSTRUCTION | 6 |
| 80-981 | 4" RECESSED CAN FOR REMODEL | 6 |
| 80-982 | 5" RECESSED CAN FOR NEW CONSTRUCTION | 6 |
| 80-983 | 5" RECESSED CAN FOR REMODEL | 6 |
| 80-988 | 6" RECESSED CAN FOR NEW CONSTRUCTION | 6 |
| 80-989 | 6" RECESSED CAN FOR REMODEL | 6 |

OPTIONAL ACCESSORIES / SOLD SEPARATELY

| Item | Description | Case Quantity | Product Image |
|--------|-----------------------------------------------------------------------|---------------|---------------------------------------------------------------------------------------|
| 80-868 | TEMPORARY WORK LIGHT SOCKET WHIP SUPPORTS A19 AND A21 LAMPS UP TO 25W | 6 |  |



Quick connect for wiring
(no wire nuts needed)



Quick connect for downlight

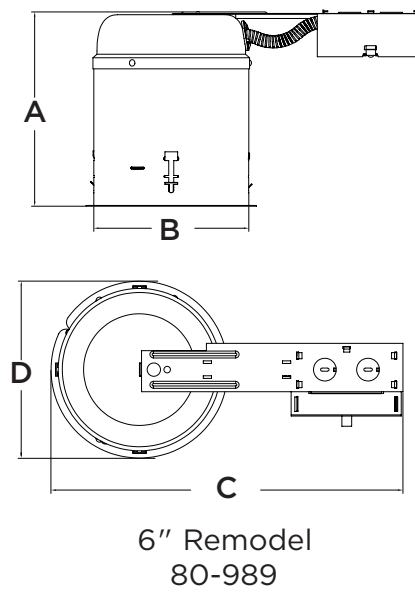
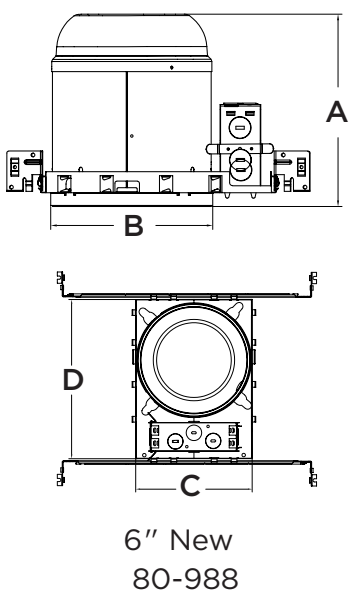
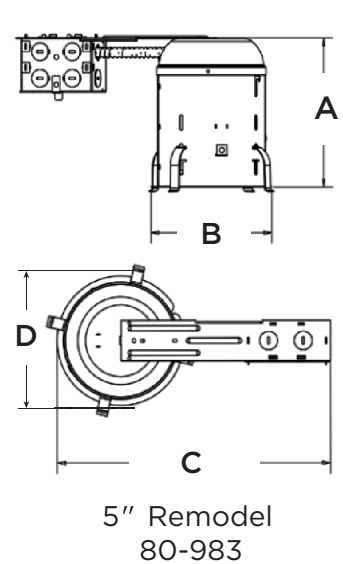
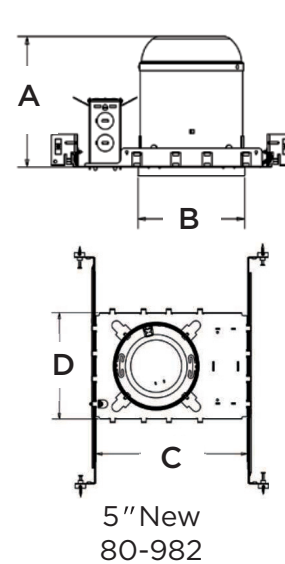
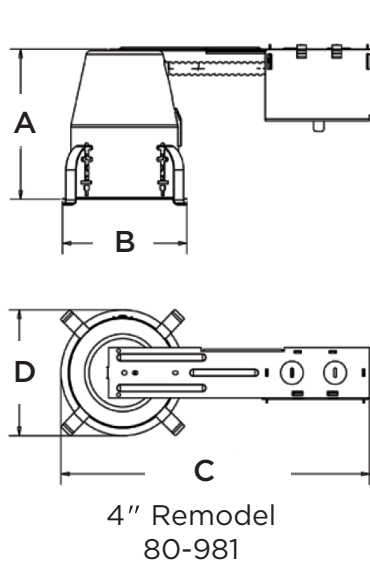
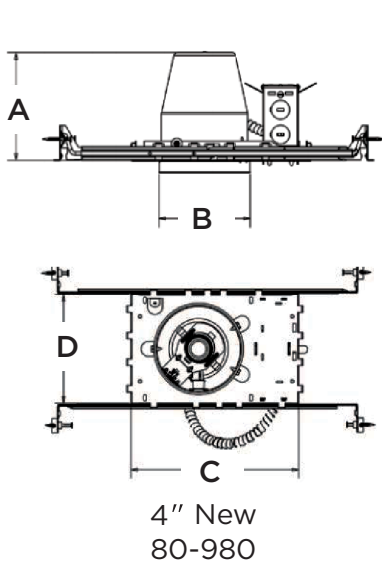
Specifications are subject to change without prior notice.

*Cans are wet location rated when used with wet location rated LED trims.

WARNING: Some products included in this specification sheet may be subject to the warning requirements of California's Proposition 65. Please refer to your product packaging for more information.

DIMENSIONS

| Item | A | B | C | D |
|--------|-------|-------|--------|-------|
| 80-980 | 4.94" | 4.31" | 8.13" | 5.19" |
| 80-981 | 5.56" | 4.75" | 11.81" | 4.75" |
| 80-982 | 6.75" | 5.62" | 9.94" | 6.88" |
| 80-983 | 7.31" | 6.06" | 13.06" | 4.75" |
| 80-988 | 7.52" | 6.34" | 6.46" | 8.82" |
| 80-989 | 7.72" | 6.16" | 13.06" | 6.77" |



Specifications are subject to change without prior notice.

*Cans are wet location rated when used with wet location rated LED trims.

WARNING: Some products included in this specification sheet may be subject to the warning requirements of California's Proposition 65. Please refer to your product packaging for more information.