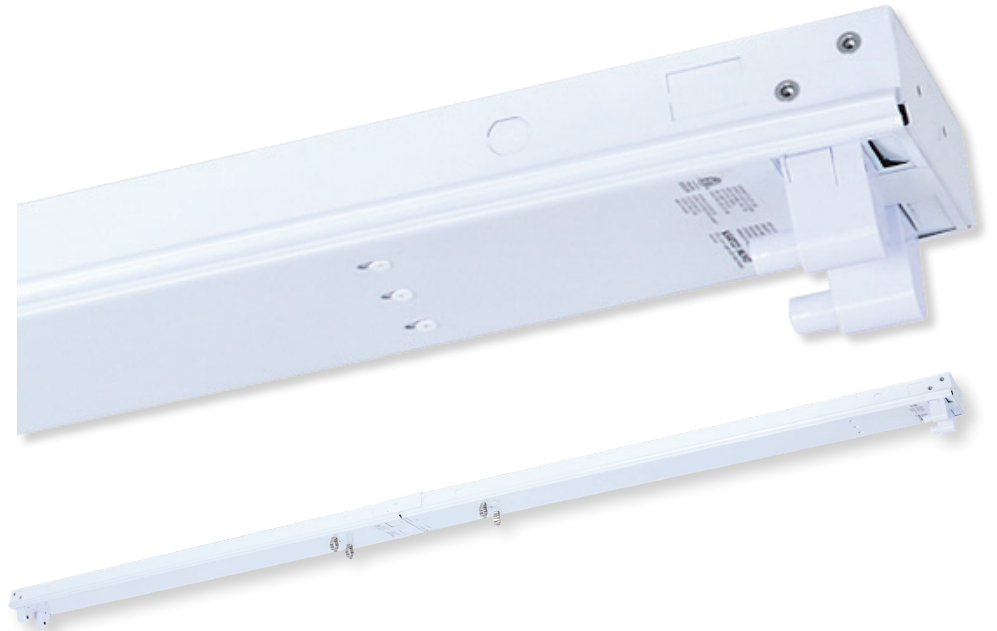


8' LAMP READY FIXTURE

DUAL/QUAD | Fa8 READY



For use with four 4' lamps, or two 8' lamps



Connector plate attaches two 8' sections



SHIPS IN 4' CASE

CONFIGURED FOR 2 - 8' LAMPS OR 4 - 4' LAMPS

TYPE B READY

KNOCKOUTS FOR WIRING AND EM TEST BUTTON

INCLUDES Fa8 SINGLE PIN LAMP HOLDERS

SUGGESTED APPLICATIONS

- Warehouses
- Retail
- Gymnasiums
- Task Lighting

Streamline long-run lighting installations with this versatile 8' T8 Lamp Ready Fixture, designed for Dual/Quad Fa8 lamps. Ideal for Type B ballast bypass applications, it also offers ample space to accommodate a driver for Type A configurations, providing added flexibility for a range of project needs. The fixture ships in two 4' sections with a convenient connector plate for easier handling, reduced shipping costs, and simplified installation, while integrated knockouts support quick wiring and EM test button access. With interchangeable Fa8/R17d lamp holders and a full range of compatible accessories, this fixture delivers a customizable, efficient solution for demanding commercial and industrial environments. Kit includes 8 x G13 wired holders for the 4 x 4' installation and 4 x Fa8 wired holders for 2 x 8' installation.



GENERAL SPECIFICATIONS

Range Voltage: 120V-347V **Construction:** Steel
Max. Wattage: 660W **Mounting:** Surface or Suspension

Voltage and Wattage are dependent on ballast and lamp. Please check compatibility of all components as you construct your lighting system.

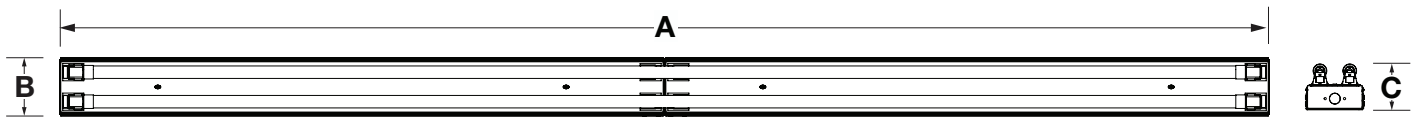


ITEM SPECIFICATIONS / ORDER INFO

Item	Size	Number of Lamps	Compatible Lamps	Finish
65-905	8'	2/4	T8	White

DIMENSIONS / WEIGHTS

Item	Length (A)	Width (B)	Height (C)	Weight
65-905	97.00"	4.70"	3.70"	8.60 Lbs.



OPTIONAL ACCESSORIES (SOLD SEPARATELY)

Item	Description	
65-906	8' REFLECTOR FOR USE WITH 65-905 (2 X 4' SECTIONS)	
65-907	8' CAMBERED PROTECTIVE CAGE FOR USE WITH 65-905 (2 X 4' SECTIONS)	
65-908	Fa8 LAMP HOLDER WIRING KIT	
65-909	R17d LAMP HOLDER WIRING KIT	
65-919	3' SUSPENSION KIT (65-905 REQUIRES 3 KITS)	
S8000	5W EMERGENCY LED DRIVER	
S8002	10W EMERGENCY LED DRIVER	

FEATURES



Knockouts for Convenient Wiring



Deep channel to accommodate ballast or emergency driver where needed



Includes Fa8 lamp holders, or choose R17d lamp holders (sold separately)



Comes with two 4' pieces and connector plate for secure assembly

Specifications are subject to change without prior notice.

WARNING: This product can expose you to chemicals including Lead which is known to the State of California to cause cancer, or birth defects, or other reproductive harm. For more information, go to <http://www.P65Warnings.ca.gov>. Visit satco.com/service/warranty for complete warranty details.